

# GMM2E 355 L 4a

# IE2

# GAMAK

3-Phase 400 V (Δ) 50 Hz

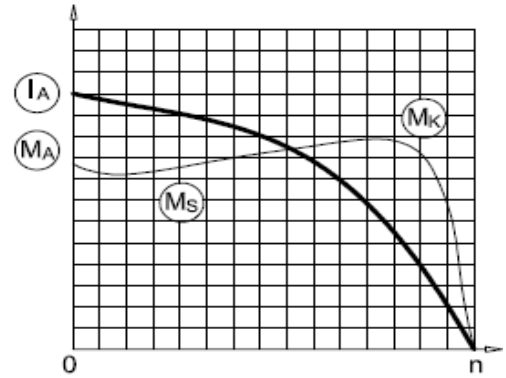
Duty Type : S1

Degree of protection : IP 55 ( TEFC )

Insulation class : F ( 155 °C )

Temp rise : Class B ( 80K )

Mounting Design : B3



## ELECTRICAL DESIGN

## Direct On Line

Rated output (kW) : 400

Locked rotor Current – Ia (A) : 4830

Ia / In : 7.0

Speed (rpm) : 1488

Locked rotor Torque – Ma (Nm) : 5134

Ma / Mn : 2.0

Rated current (A) : 690

## Y / Δ Starting

Torque – Mn (Nm) : 2567

Locked rotor Current – Ia (A) : 1587

Ia / In : 2.3

Cos φ : 0.88

Locked rotor Torque – Ma (Nm) : 1540

Ma / Mn : 0.6

|              |      |      |      |
|--------------|------|------|------|
| Efficiency % | 4/4  | 3/4  | 1/2  |
|              | 95.4 | 95.4 | 94.3 |

Breakdown Torque – Mk (Nm) : 7188

Mk / Mn : 2.8

Moment of inertia J (kgm)<sup>2</sup> : 7.2

## MECHANICAL DESIGN

Frame : Cast Iron

End shields : Cast Iron

Cooling fan : Plastic

Terminal box : Aluminium

Cable gland : M79

No of cable glands : 2

## Bearing Arrangement

Standard design

Drive End

Non Drive End

6321 C3

6321 C3

Reinforced design

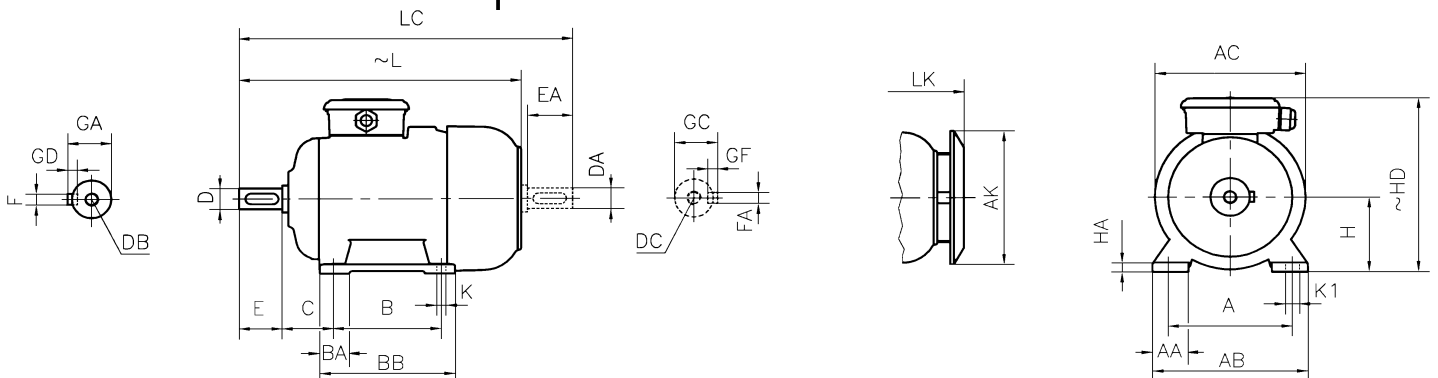
NU 321 E

6321 C3

Noise Level (dB-A) : 75

Paint : RAL 7031- Grey

Approximate weight (kg) : 1639



## DIMENSIONS

### Dimensions of foot mounted motors for mounting arrangement : B3, B6, B7, B8, B15, V5, V6

| H   | HD<br>~ | HA | A   | AA  | AB  | ØAC | ØAK | K  | K1 | B   | B' | BA  | BA' | BB  | L<br>~ | LC   | LK<br>~ | C   | E<br>EA | DB<br>DC | ØD<br>ØDA | GA<br>GC | FxGD<br>FAXGF |
|-----|---------|----|-----|-----|-----|-----|-----|----|----|-----|----|-----|-----|-----|--------|------|---------|-----|---------|----------|-----------|----------|---------------|
| 355 | 980     | 50 | 610 | 150 | 740 | 732 | 571 | 28 | -  | 630 | -  | 140 | -   | 750 | 1507   | 1727 | 1584    | 254 | 210     | M24      | 100       | 106      | 28X16         |

\* Efficiencies are calculated according to indirect method where the additional load losses are determined from exact measurements at different load points.